

PUBLICS

Provocations

Architecture

Landscape

Urbanism

Elaboration

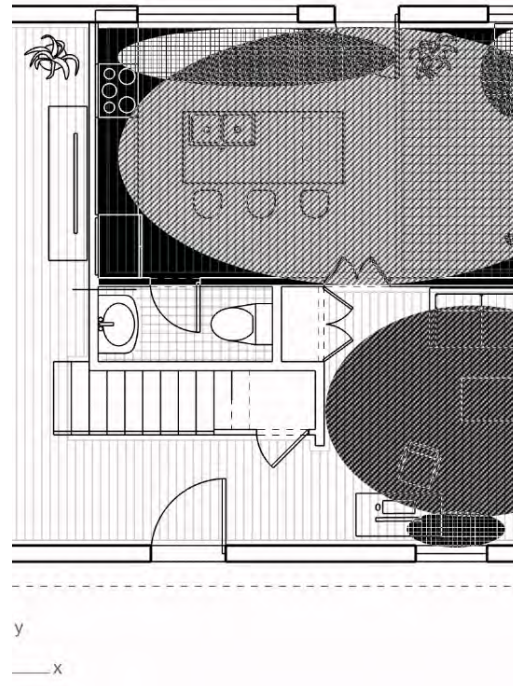
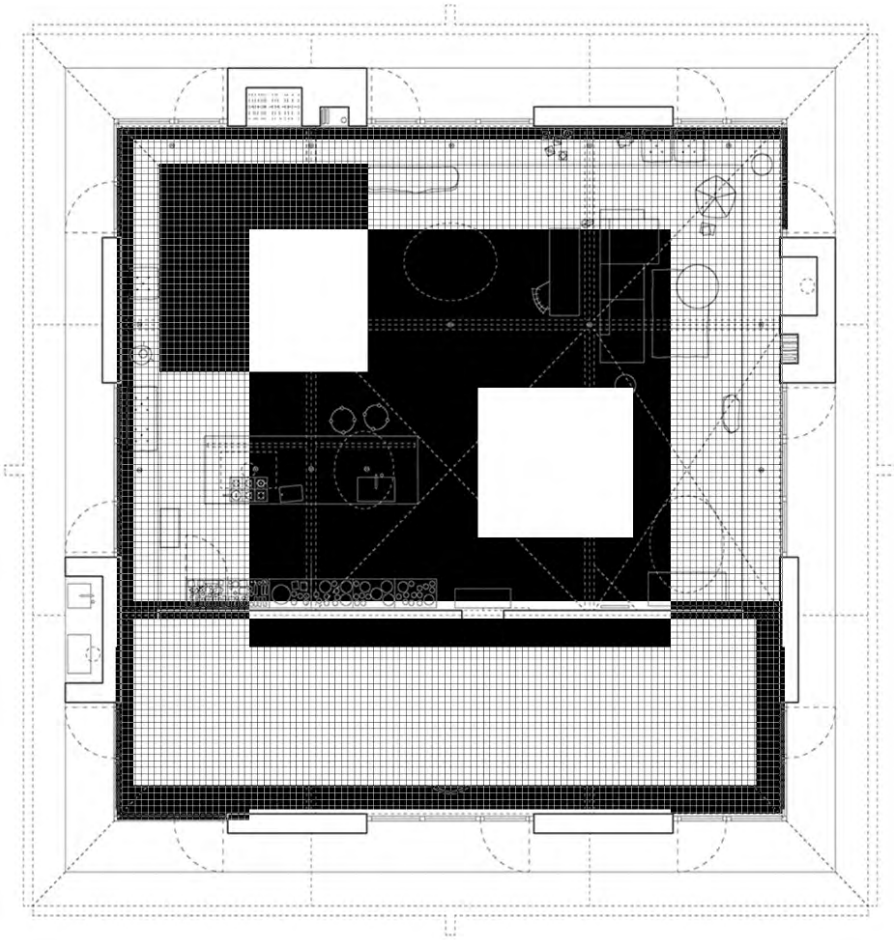
Architecture

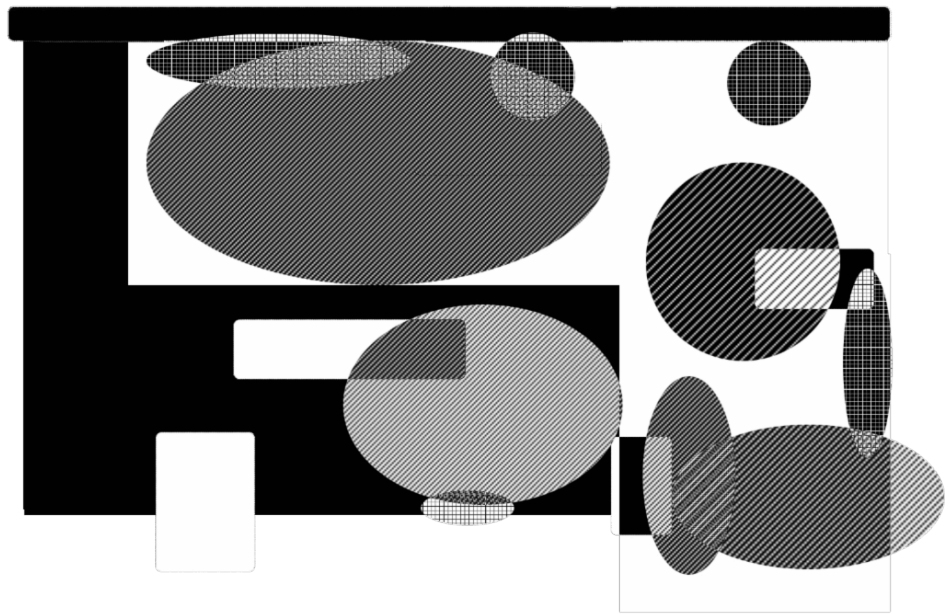
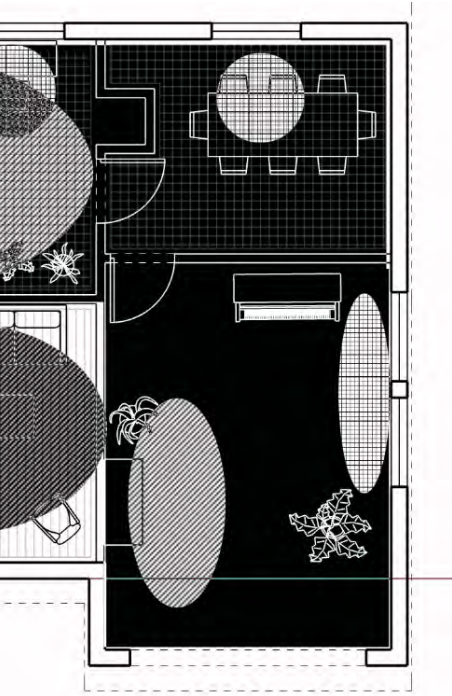
ARCHITECTURE

Diagramming Dialectics in the Single Family Home

Using the dialectics of public/private, outside/inside, and light/dark, this exercise examines the socio-spatial significance of the single family floor plan to produce something entirely new. The end result is a composite drawing which graphical represents the contrasting dialects imagined within the home.

The following three drawings reveals how this process of diagramming space can generate an end result that is entirely unrecognizable from its original state.



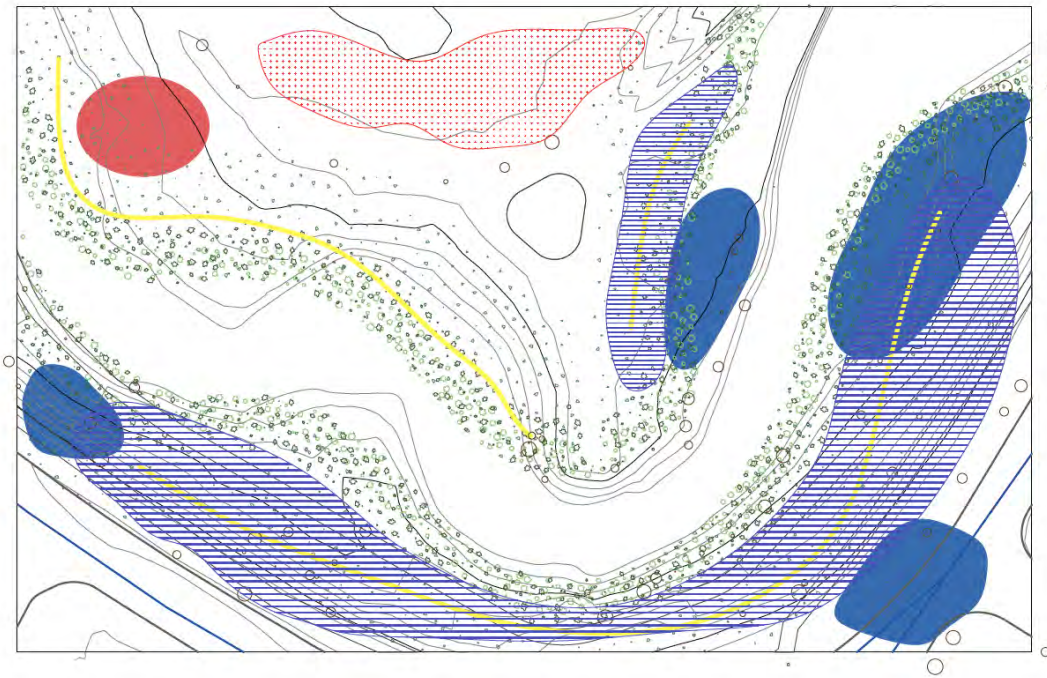


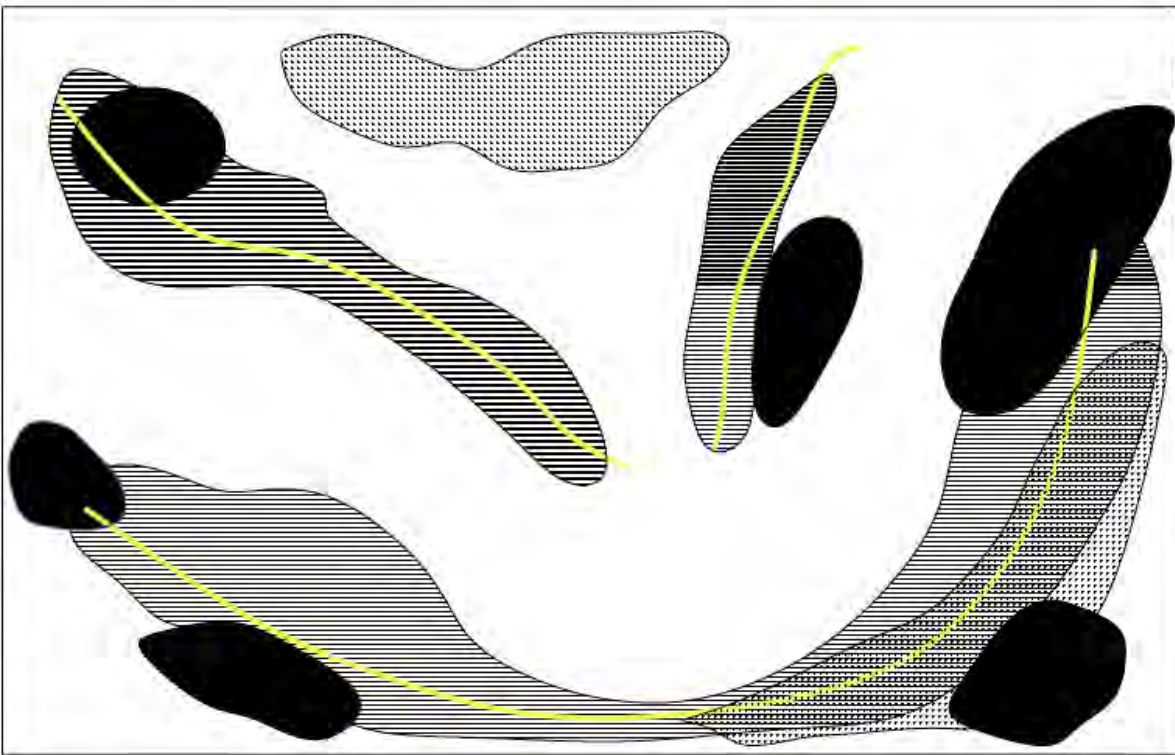
Page 07

LANDSCAPE Movement Mapping of the LA River

This drawing examines the patterns of movement for both humans and non-humans inhabiting the L.A River Basin. Color, texture, and line weight are utilized to demarcate the different spatial uses of the Riparian Corridor based on the public and private sectors of the environment.

The end result, similar to the previous composite drawing, produces a high contrast graphic that asks the viewer to re-imagine the spatial configuration of the riparian corridor. With identifiable landmarks such as pathways, trees, and the river itself removed, the viewer is forced to reconstruct their image of the L.A river using the drawing that remains. The significance of this type of mapping strategy is that it allows for an alternative vision of the spatial possibilities that the L.A River holds.








URBANISM

Visualizing Urban Accessibility in Mar Vista

This study explores ways to visualize the limitations and possibilities that the Mar Vista Tract holds as a residential urban neighborhood. Continuing the week's theme of 'publics', this diagram uses overlapping circles to demarcate the spaces that are isolated, walkable, public, and private.

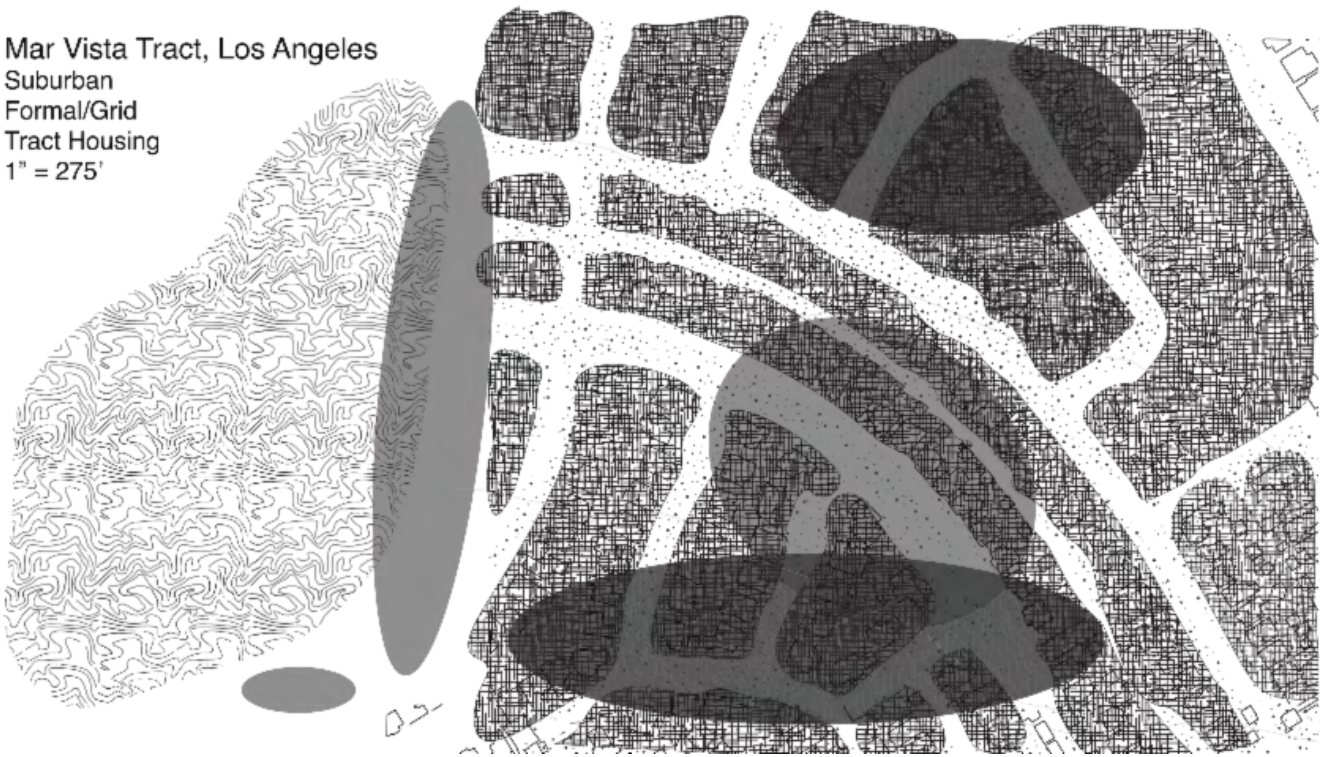
As an almost exclusively residential zone, the Mar Vista Tract presents as an interesting case study of an "urban" area that is primarily homogeneous single family homes. However, location near Venice Beach and other heavily trafficked areas positions it as a contradictory site of simultaneous accessibility and in-accessibility.

Mar Vista Tract, Los Angeles
 Suburban
 Formal/Grid
 Tract Housing
 1" = 275'

- KEY:**
- isolated
 - walkable
 -  = ocean
 -  = private
 -  = public



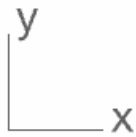
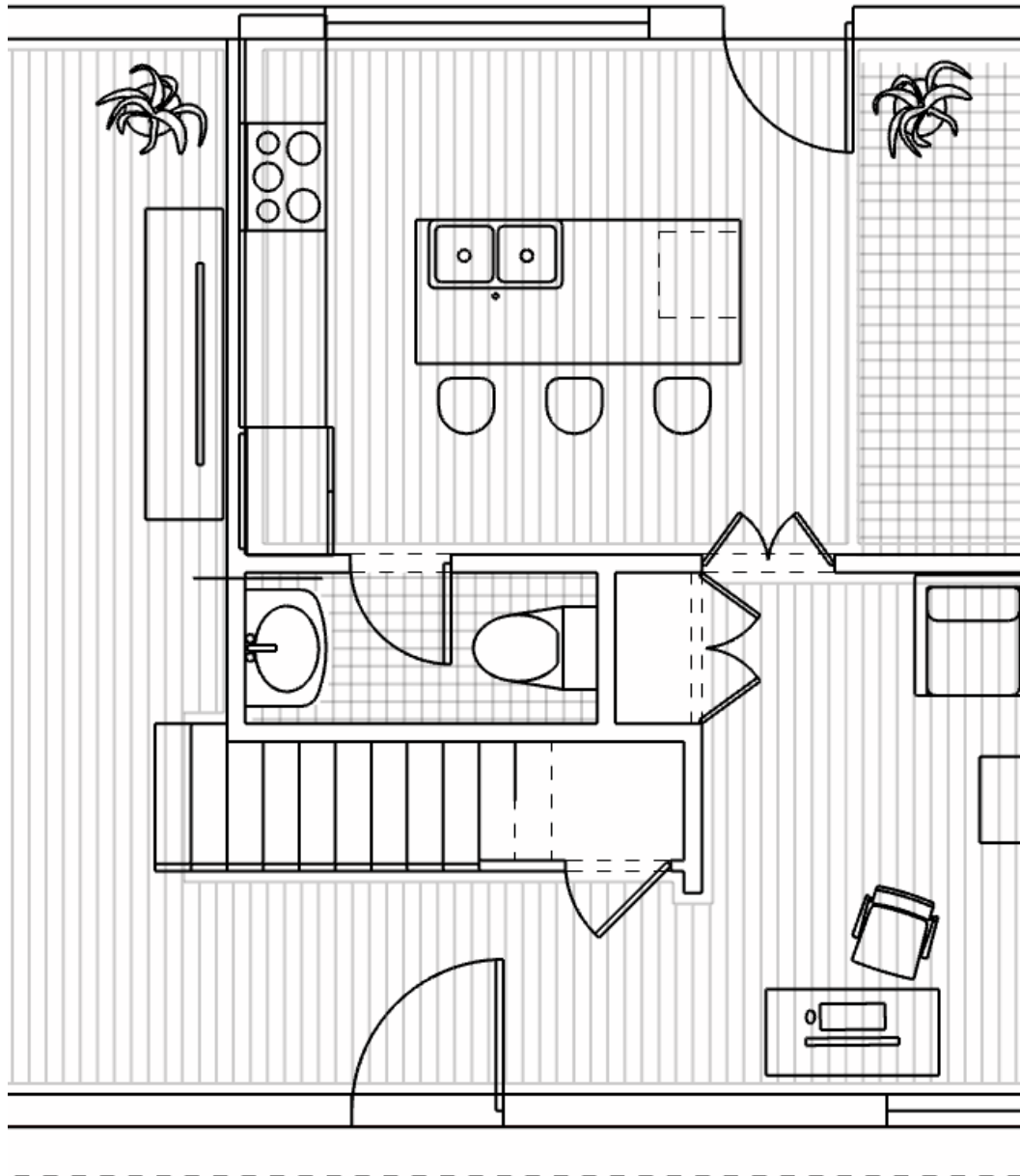
Mar Vista Tract, Los Angeles
Suburban
Formal/Grid
Tract Housing
1" = 275'

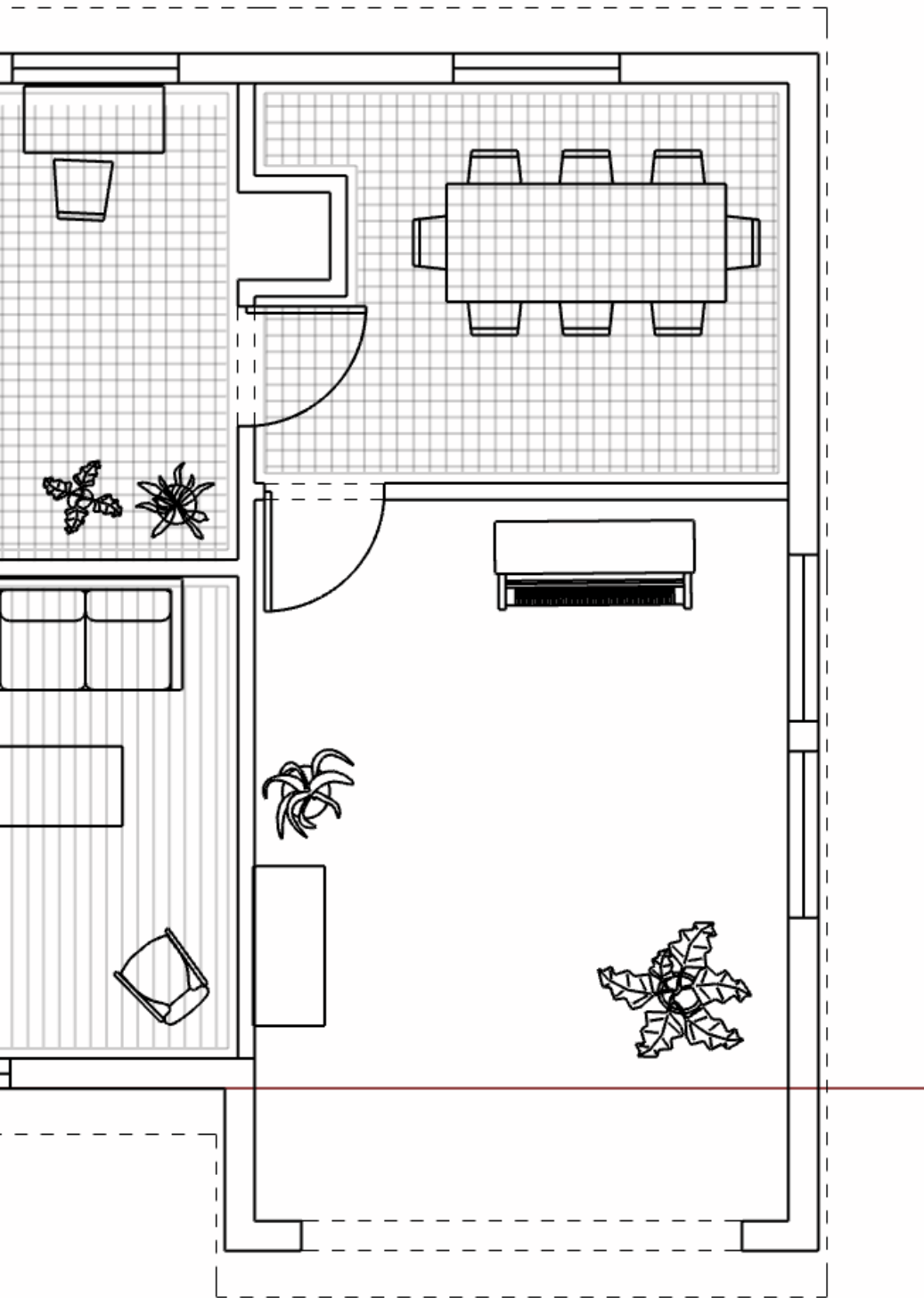


ARCHITECTURE

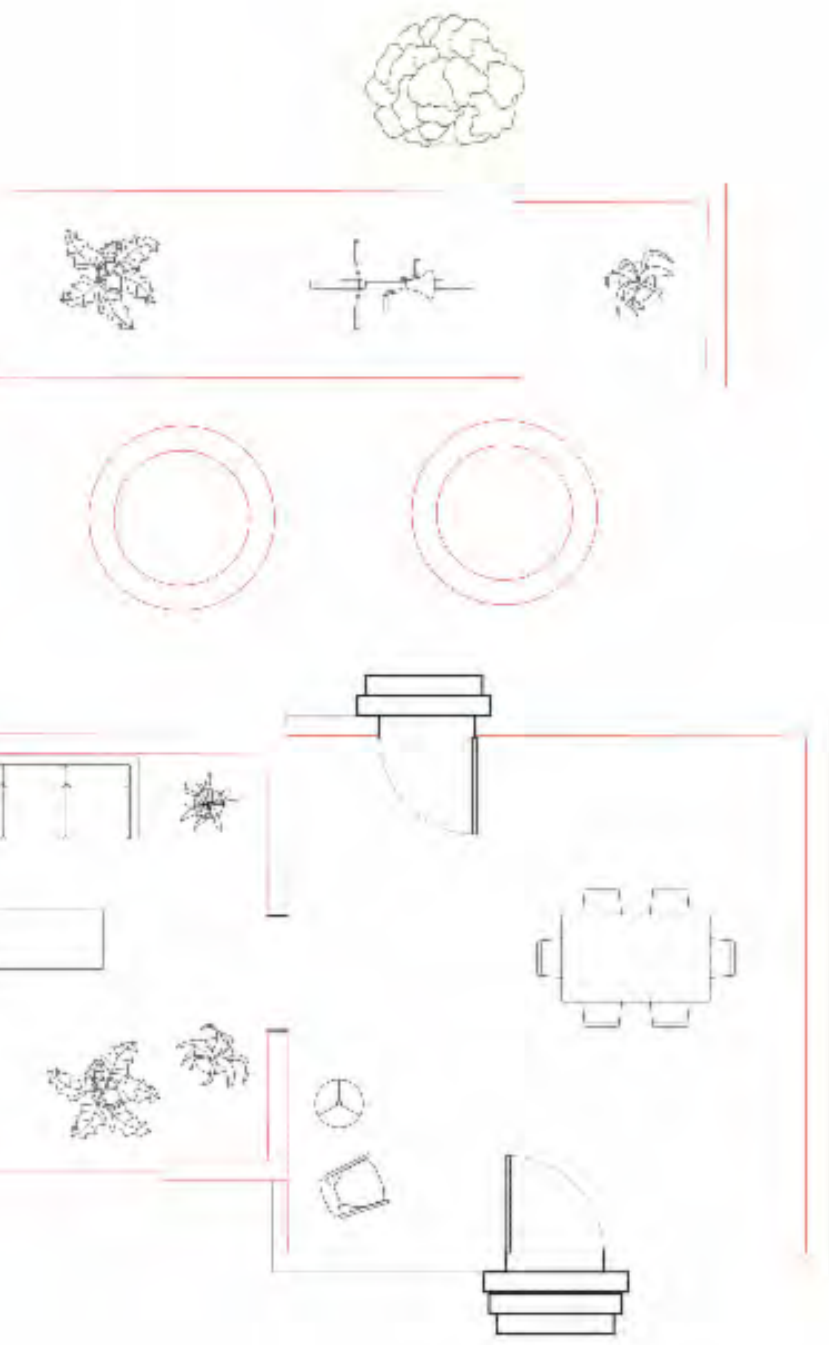
Reconfiguring the Single Family Home

Reconfiguring the single family home requires letting go of the traditional rules of spatial configuration and practicality. Using the graphical composite drawing of the single family home as a framework, this project re-imagines the spatial possibilities of the original single family home floor plan into something entirely different. Pragmatism aside, the result generates a discussion on what type of spaces seem desirable to inhabit.









CLIMATE CHANGE

Provocations

Landscape

Urbanism

Architecture

Elaboration

Landscape

LANDSCAPE

Historical Section Analysis of the LA River Basin

This drawing seeks to produce a visual representation of the long winded history of the Los Angeles River Basin. Each layer in the section demarcates the ways in which landscaping decision altered the future of the river and its ability to survive the effects of climate change.

The early channelization of the river into an artificial, concrete basin means that human intervention into the state of the river is nothing new. However, visualizing the future of the L.A river in regards to climate change and new development demands recognition of the neighboring communities that are interconnected part of this environment's ecosystem.

Los Angeles Climate often described as a "Mediterranean climate" that is mostly sunny, dry, with brief seasonal rainfalls. However, with increasing global warming, the temperate climate will become more extreme. Flooding during the winters and a dry summer basin during the summers is highly likely.

Climate risks associated with future development, rising carbon emissions, etc...

River Revitalization/Development Parallel: Several rival plans, groups, community members, and city officials at play, with anti-gentrification organizations playing a pivotal role in the ongoing debate

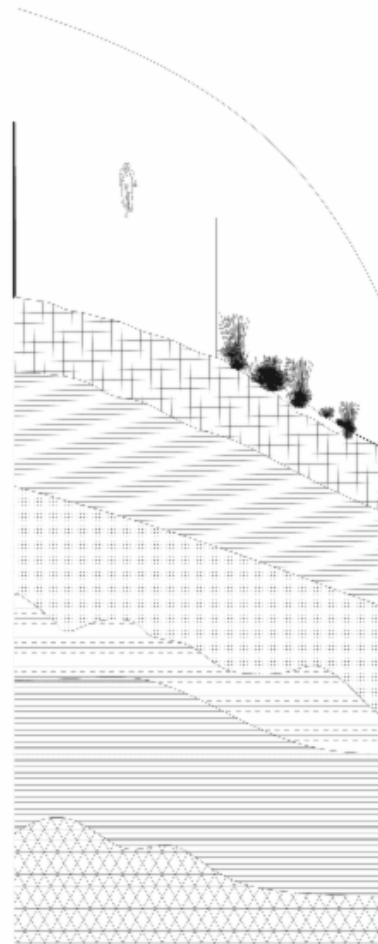
Eco-System and Social Restoration Efforts

1930 Army Corps of Engineers Concreteize the River: manufacture a straight, concrete river basin and banks with a small river flow, almost all native species do not survive past 1940

Sediment from Flooding Deposited on Banks of River

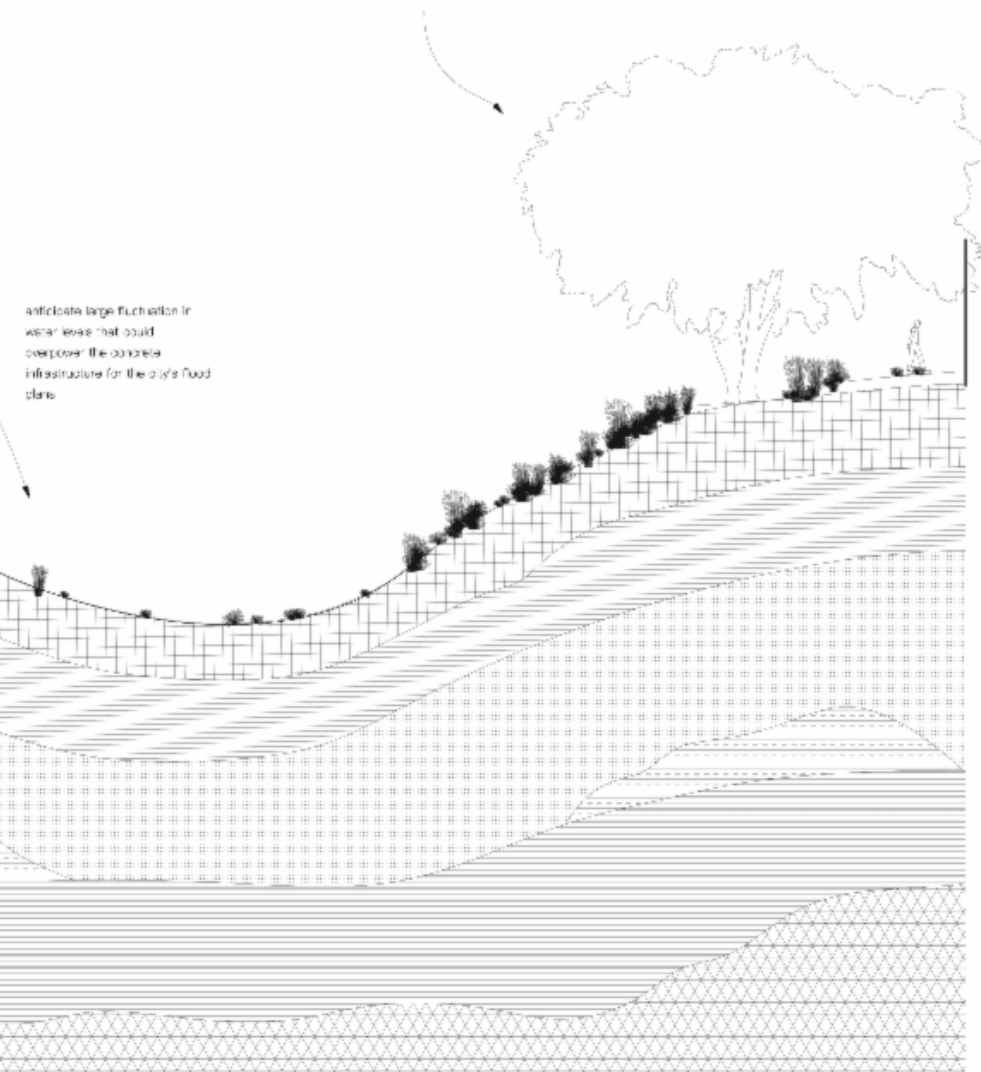
Spanish Colonizers & Hazardous Flooding

"Angels People Inhabit" River: source of fresh water and food, originally free flowing and with lively ecosystem



Future plans dictate the planting/removal of plants that will alter the resilience of the ecosystem to various climate-related threats such as flooding, fires, and earthquakes.

anticipate large fluctuation in water levels that could overpower the concrete infrastructure for the city's flood plans

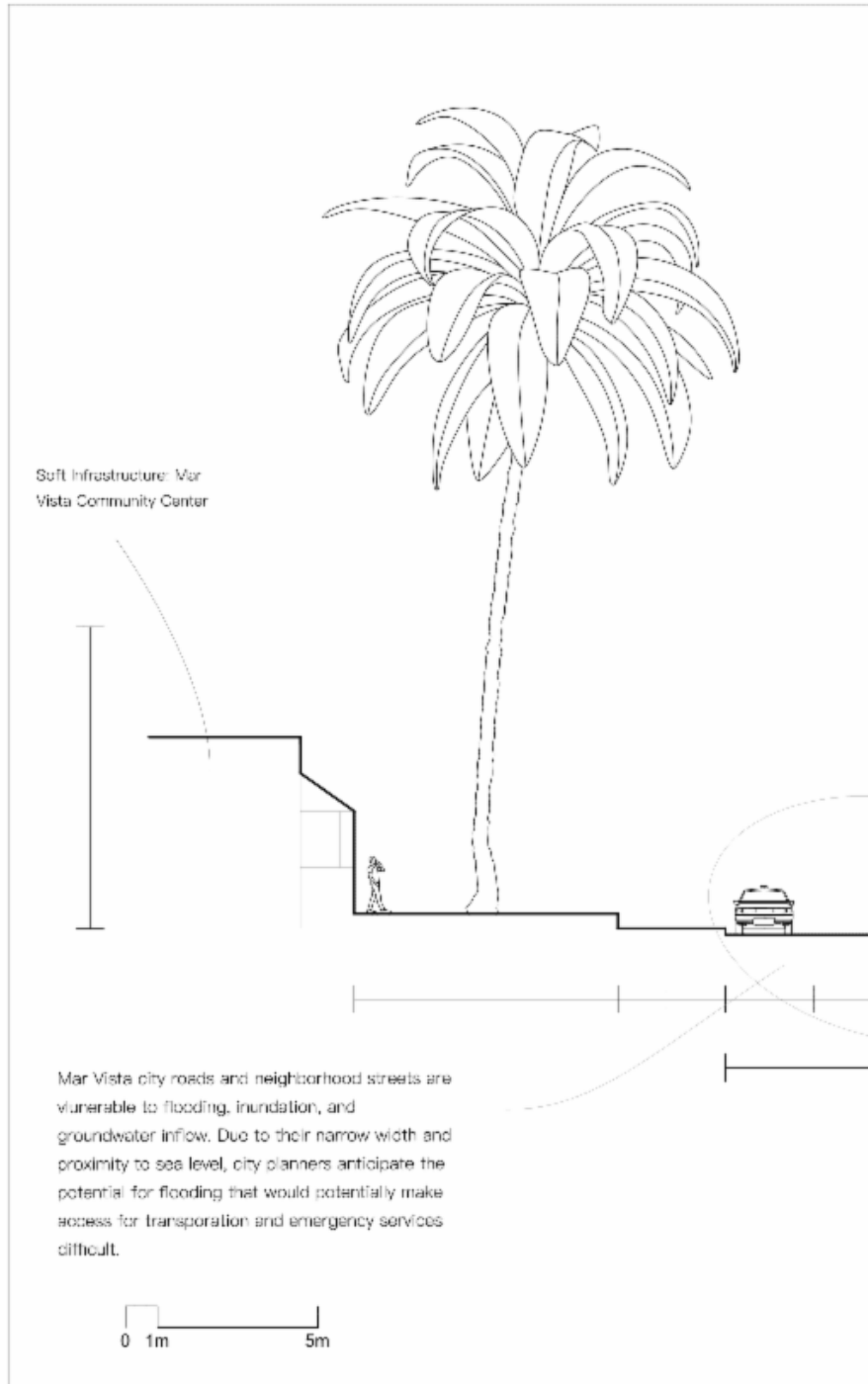


URBANISM

Mar Vista Streetscape Flood Threat Study

This study examines the Mar Vista Tract in section as a vulnerable site to the increasing effects of climate change. Due to its coastal location, sea-level rise and flooding are pressing issues to the urban design of the neighborhood. The historical architecture of homes in Mar Vista are particularly susceptible to these issues due to their tendency to be low to the ground, single story residences. Additionally, the narrow two lane streets themselves are also vulnerable to flooding, inundation, and groundwater inflow.

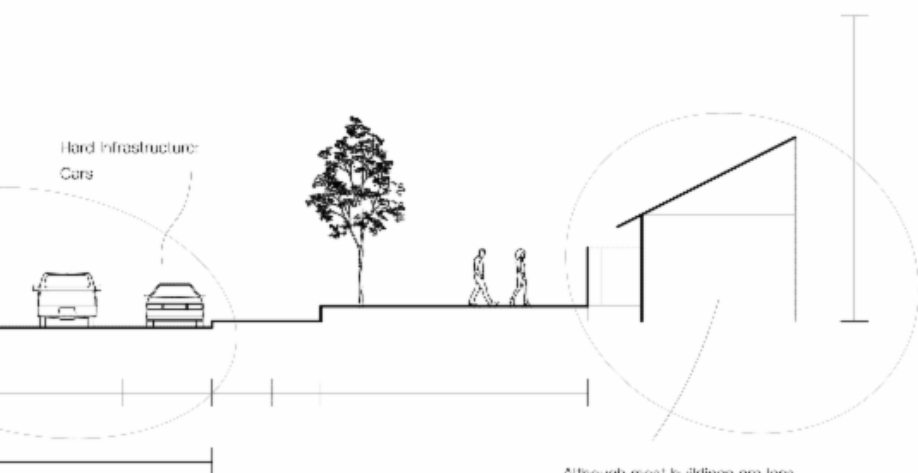
Mar Vista Tract Streetscape, L



Los Angeles

Narrow two way traffic

Climate Issue: Sea Level Rising → Flooding
 The Mar Vista neighborhood is located in close proximity to Venice Beach and the Pacific Ocean. This proximity, combined with Mar Vista's architectural style of low-slung, mid-century modern homes, results in the neighborhood being vulnerable to the rapid threat of rising sea levels.



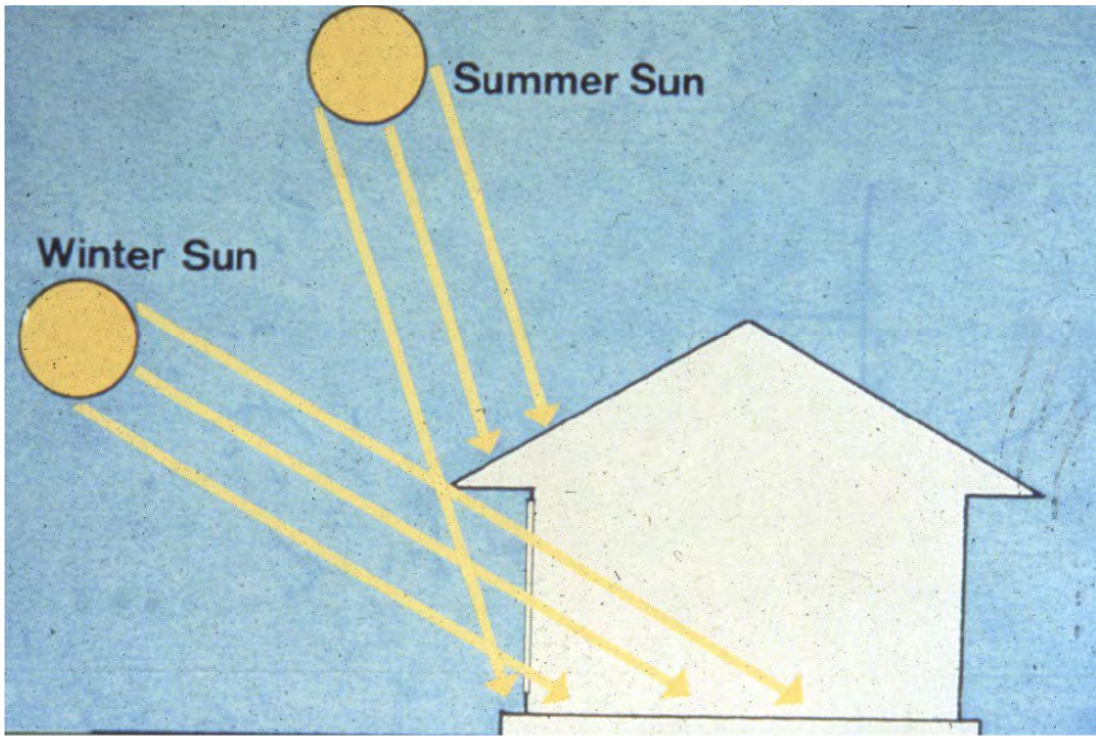
Although most buildings are less vulnerable to flooding and inundation than city streets, coastal infrastructure that is closer to sea level is still prone to being affected. Mar Vista residences tend to be single-story, low to the ground homes which make them especially dangerous. Scientists predict that by the mid-21st century, flooding caused by storm waves will lead to inevitable property damage.

ARCHITECTURE

L.A. Upside Down: the Single Family Home in the Opposite Climate

This exercise imagines the single family home in a climate unnatural to Los Angeles: cold and snowy. In order to adapt the existing infrastructure of the home to the new climate conditions, the verb "thickened" is utilized in relation to the walls, roof, and foundation.

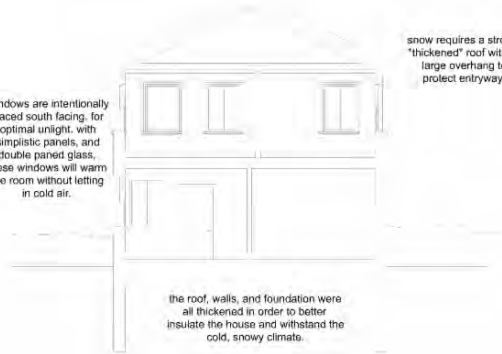
The second element taken into account is the use of sun for warmth. Windows must be designed and placed intentionally in order to direct the right amount of sun without losing insulation.



Los Angeles, California...
but with a cold and snowy climate



windows are intentionally placed south facing, for optimal sunlight, with simplistic panels, and double paned glass, these windows will warm the room without letting in cold air.



snow requires a strong, "thickened" roof with a large overhang to protect entryways

the roof, walls, and foundation were all thickened in order to better insulate the house and withstand the cold, snowy climate.

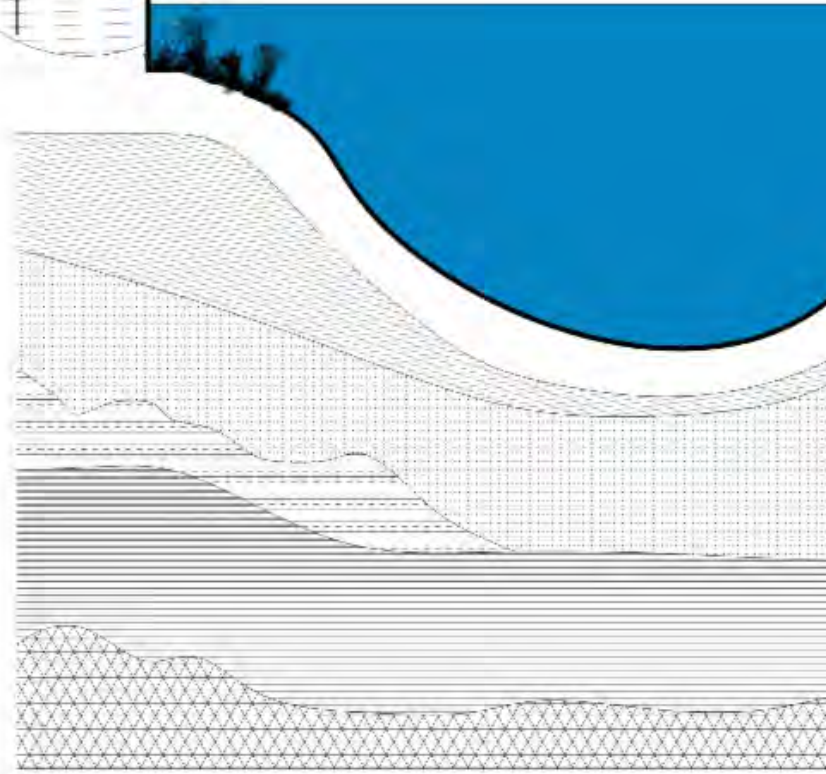
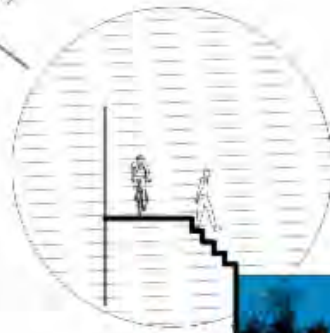
LANDSCAPE

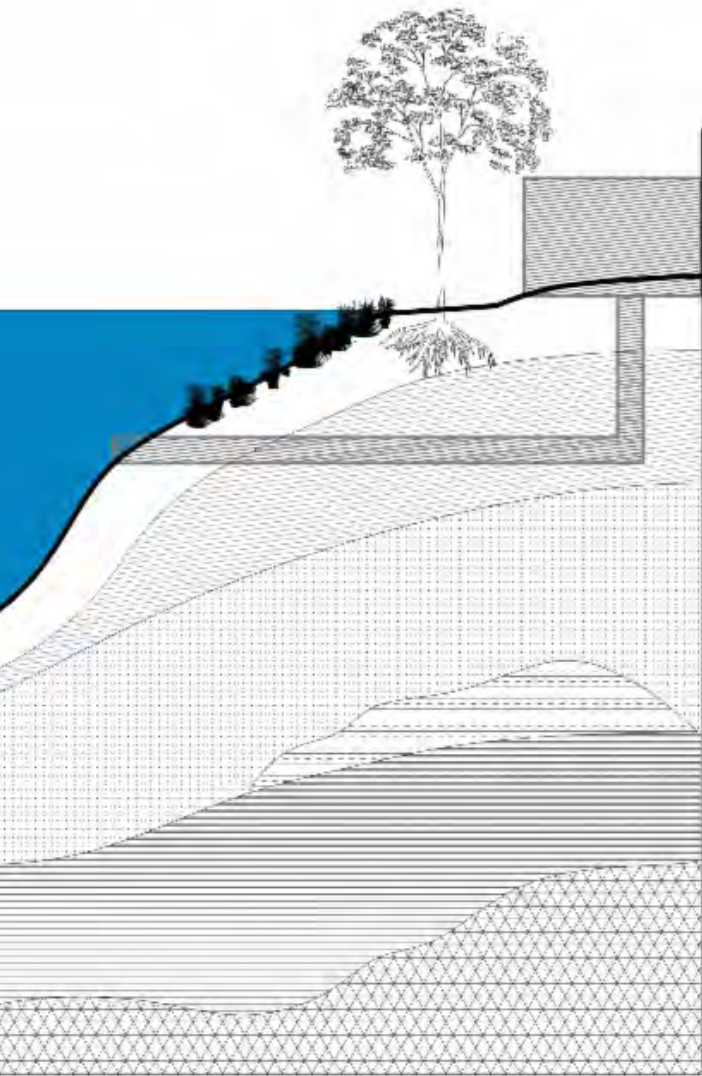
Bridging Mitigation Tactics with Resource Building in the LA River Basin

Although originally channelized to mitigate potential flooding and stormwater overflow, the Los Angeles River will still need re-imagining in order to adapt to the conditions of climate change. This drawing not only redesigns the Los Angeles River to withstand a large increase in annual flooding, but imagines how the river could be used to help with issues of drought.

This drawing hypothesizes ways in which adapting the concrete basin of the river could connect the rain and wastewater to a treatment plant in order to make it potable.

access for
individuals to enjoy
the water





water treatment plant to utilize
flood overflow to help with
drought issues

Provocations

Urbanism

Architecture

Landscape

Elaboration

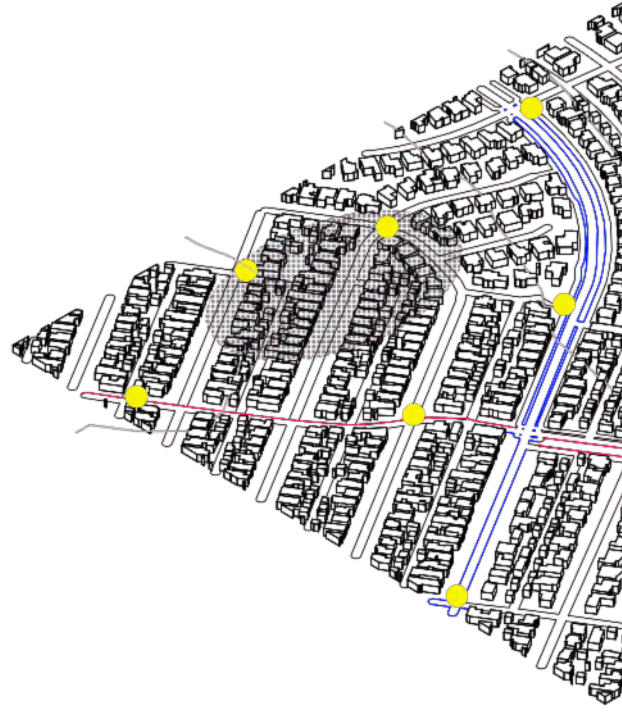
Architecture

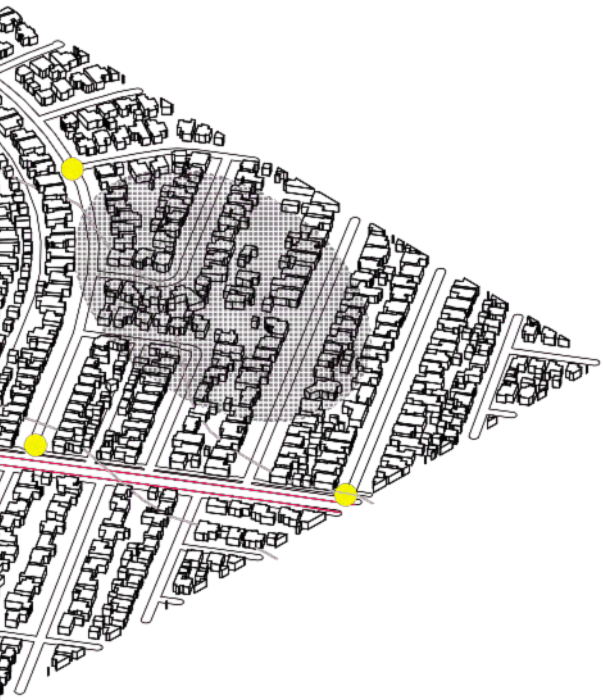
URBANISM

Examining Mar Vista in Isolation: An Urban Critique

This axonometric drawing of the Mar Vista Tract reveals the lack of connectivity and community evident in the neighborhood. It is an almost exclusively residential zone, with very few grocery stores or lots not designated as single family houses. The large thoroughfare demarcated in blue is Beethoven street, which intersects with Palms Blvd (in red). These two avenues are much wider than the small two lane roads evident in the rest of the neighborhood, and provide opportunity for points of accessibility.

Currently, there is not a single opportunity for public transit within Mar Vista, and despite its proximity to other highly trafficked areas, the neighborhood remains quite isolated. The hatched ovals represent particularly insular areas of the map that are farthest from the main avenues of Beethoven and Palms. In yellow, the map designates points of accessibility for public transit that aim to connect this isolated neighborhood.





ARCHITECTURE

Contrasting Urban Environments and Climate Change Response

Imagined as a hybrid between Los Angeles and Seattle, this collage represents the textures, shapes, and attitudes of the two cities based on their response to climate change. Both cities are faced with similar threats of forest fires that worsen the increasingly bad air quality. From a general perspective, Seattle tends to take a more active stance against these issues in relation to the passivity of Angelenos. Using the contrasting dialects of inside/outside, insular/open, and passive/active- this collage seeks to portray how different urban environments respond to a similar issue.



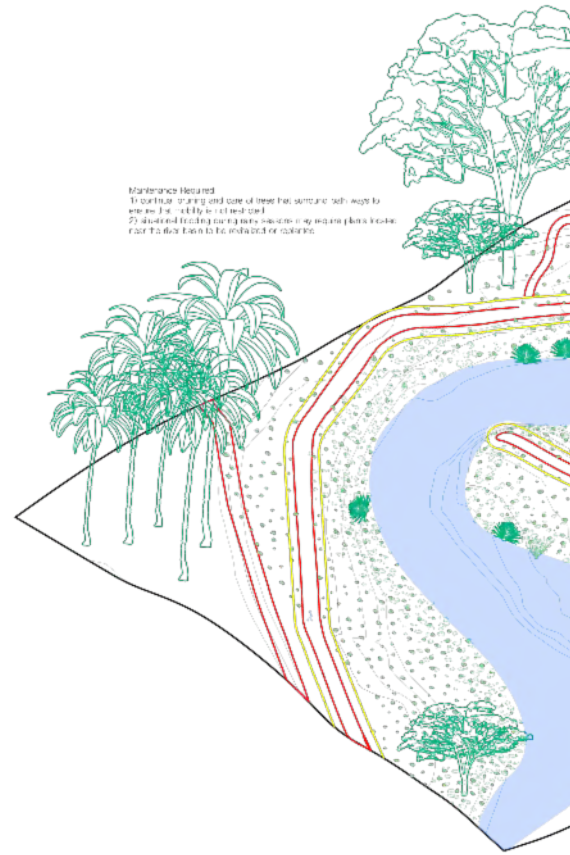


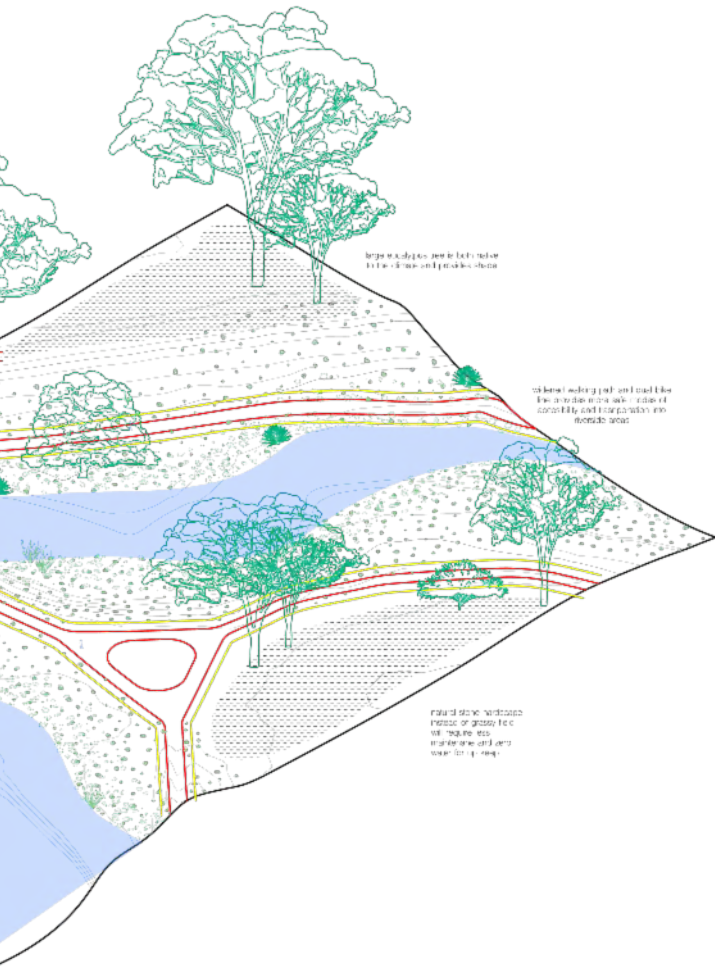
LANDSCAPE

Visualizing Sustainable Recreation at the LA River

Using the Los Angeles River as a case study lens for the riparian corridor generic, this exercise visualizes a future in which the L.A river is utilized as a site of pleasure and recreation. With bike paths and designated paved areas for picnicking and farmers markets, the corridor has the possibility to be transformed into more than a riverside walking path.

Keeping a low maintenance environment in mind, stone hardscape and pebbles/gravel replace what was once water hungry grass fields. As the basin is concrete, few shrubs and grasses require much upkeep in regards to erosion. However, the introduction of more native plants and large canopy trees to provide shade will require continual pruning and upkeep.



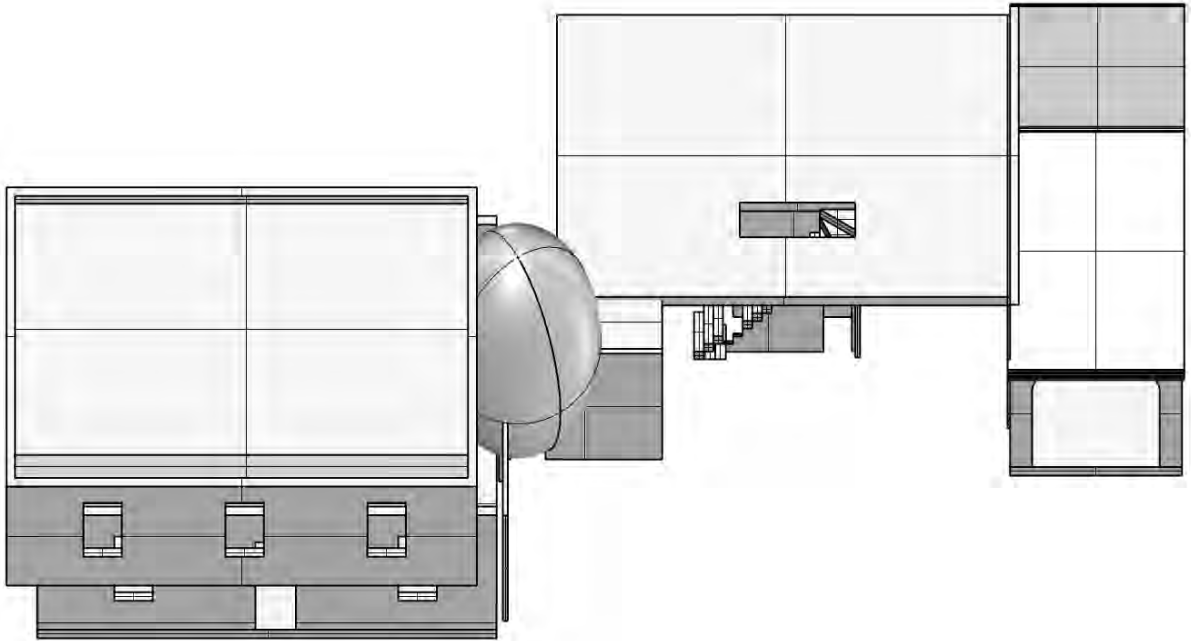


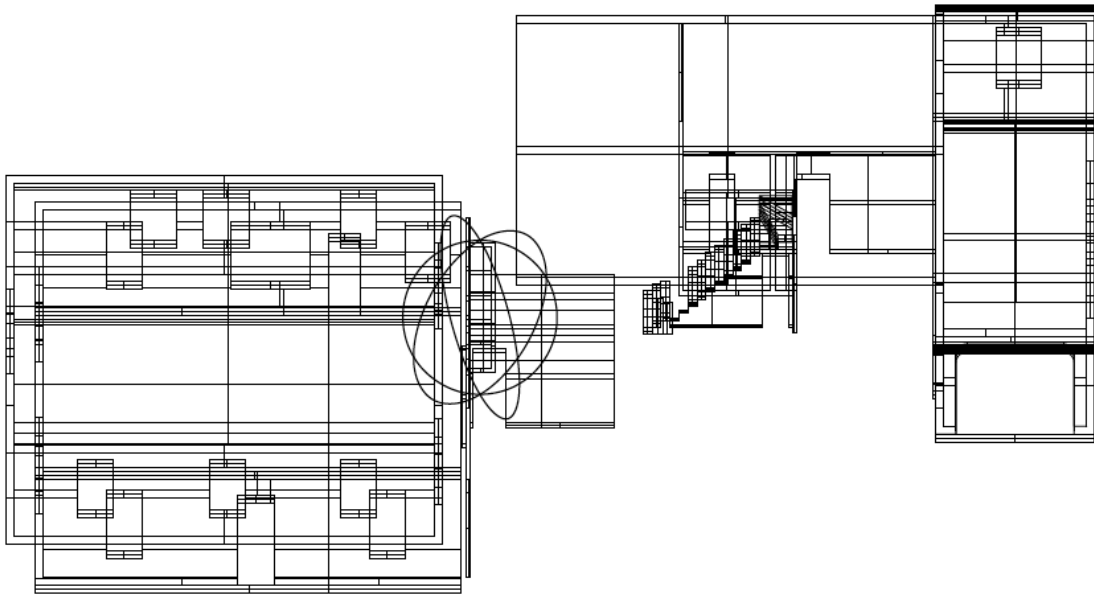
ARCHITECTURE

Undoing the Single Family Home

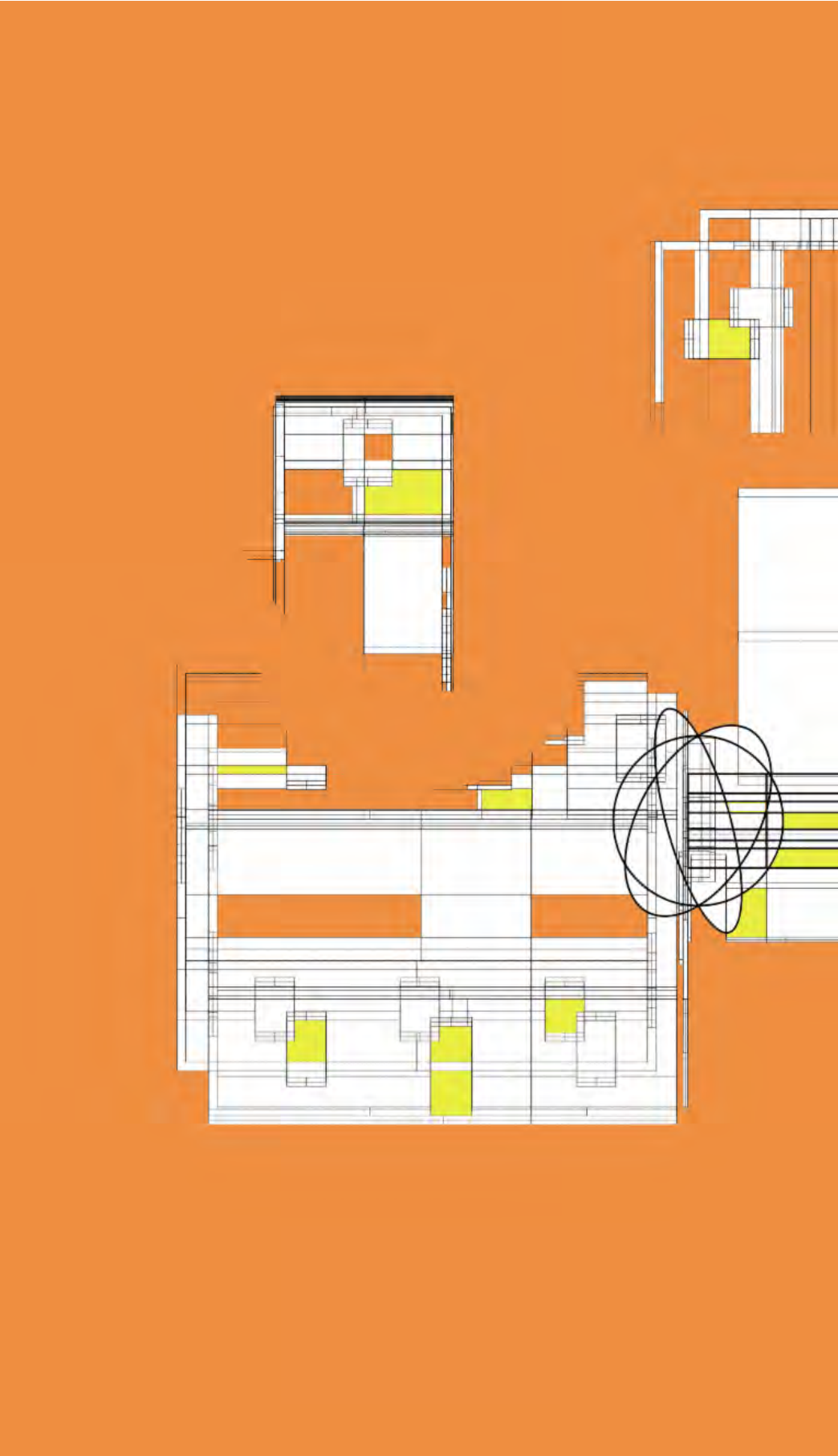
Elaborating off of the collage inspired by the L.A/Seattle hybrid, this project is a multi-step process in undoing the single family home. In plan, the traditional insular, compacted structure of the single family residence was torn apart and re-arranged. Elongated and broken up into outdoor/indoor fragments, the axonometric perspective reveals a completely new design.

This new plan continues to be abstracted as it fragmented once again in to create a new collage that graphically represents these familiar themes of insular/open, outside/inside, and isolated/connected.





Rae Hirschfeld-Smith





SOCIAL JUSTICE

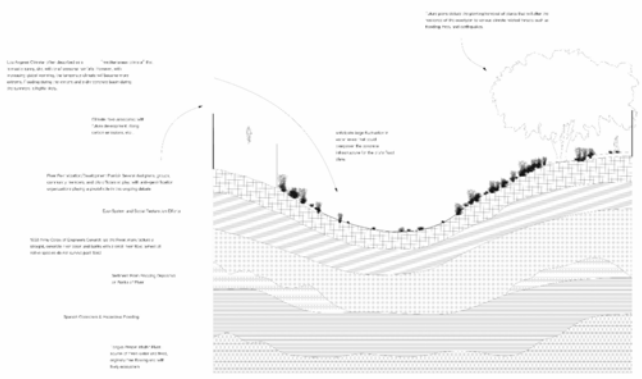
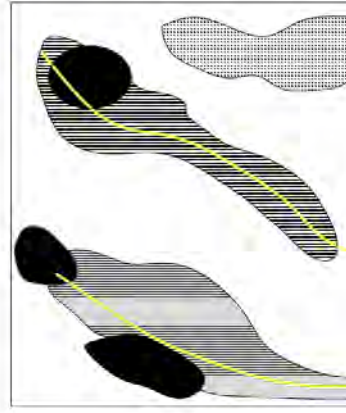
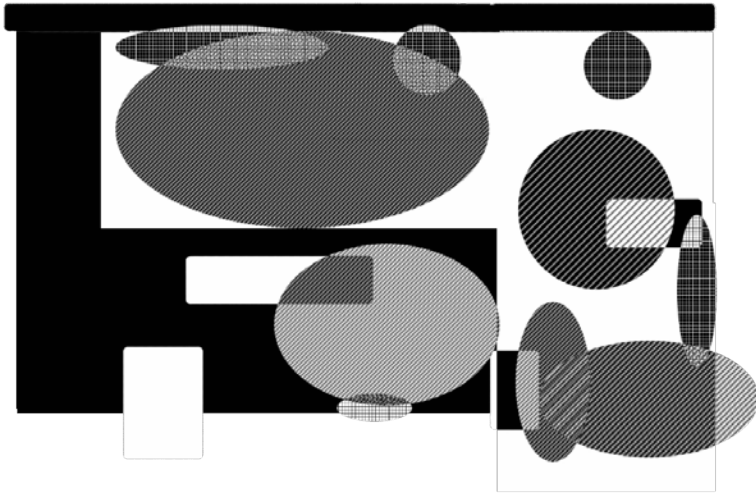
SYNTHESIS

Reflections
Provocations
Elaborations
Highlight 01
Highlight 02
Highlight 03
Synthesis

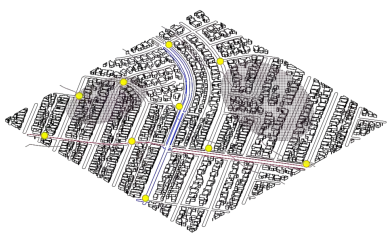
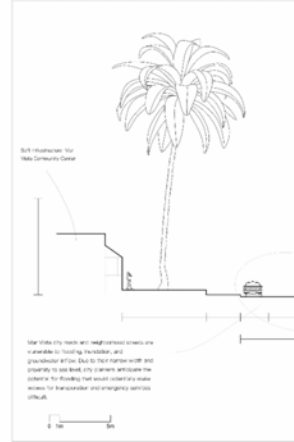
These nine drawings display different methods of representation that explore Los Angeles as a case study of sprawling urbanity. The generics of the single family home, the riparian corridor, and the Mar Vista tract act as a lens in which to examine overlapping dialectics of outdoor/indoor, insular/open, passive/active and isolated/connected.

A common thread between many of these drawings is the use of hatching to diagram the individual parts that amount to the collective whole. Deconstructing the drawing through hatching serves as a useful tool to help translate the visual narrative of the project.

Rae Hirschfeld-Smith

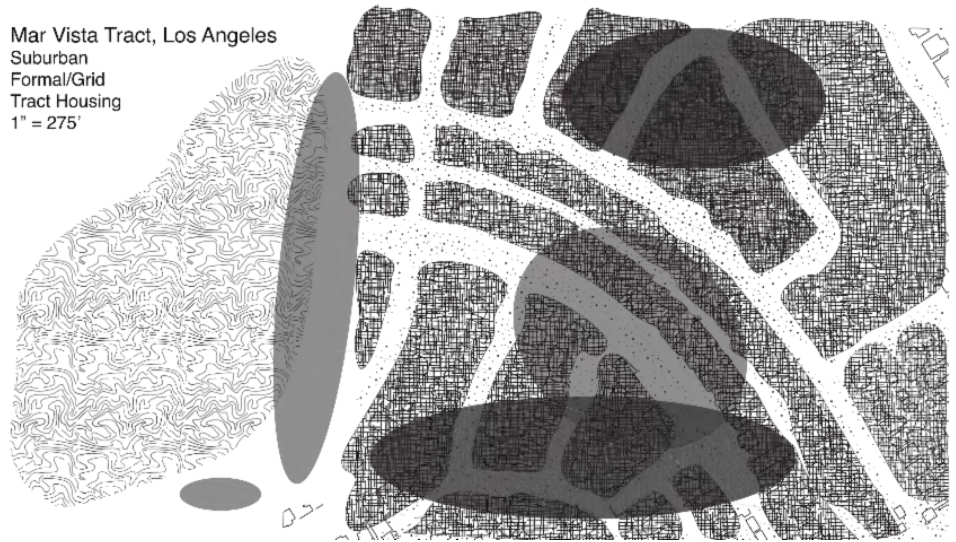


Mar Vista Tract Streetscape, Los Angeles



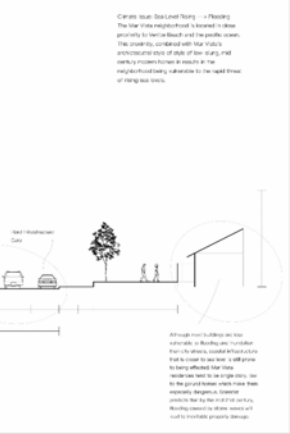


Mar Vista Tract, Los Angeles
Suburban
Formal/Grid
Tract Housing
1" = 275'

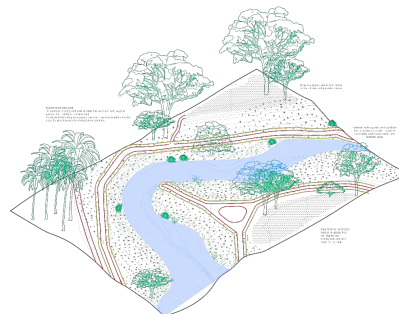


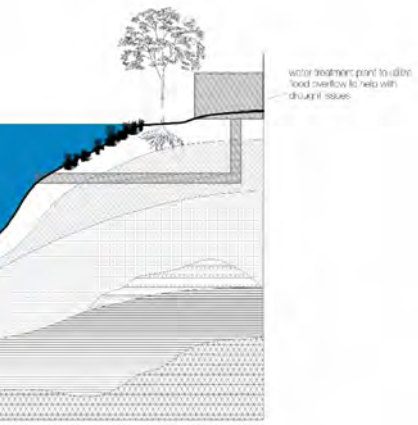
Los Angeles

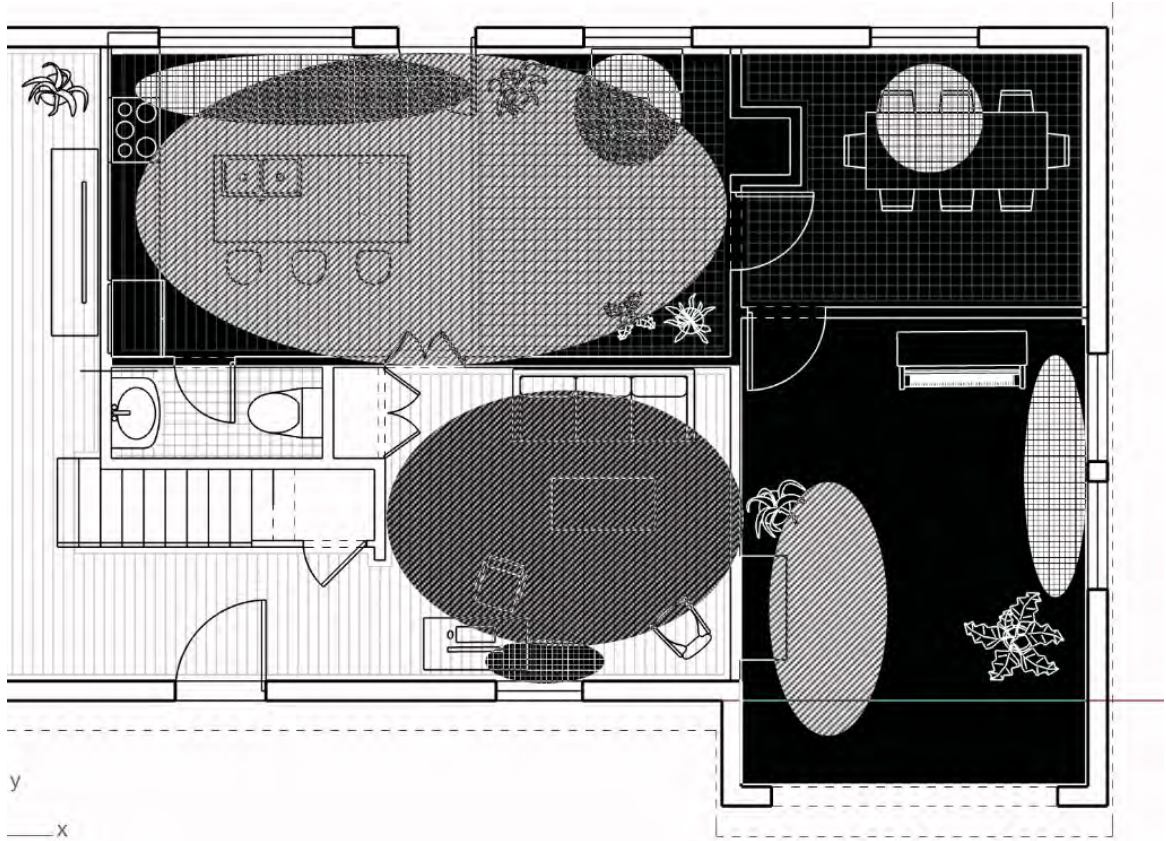
Narrow two way traffic

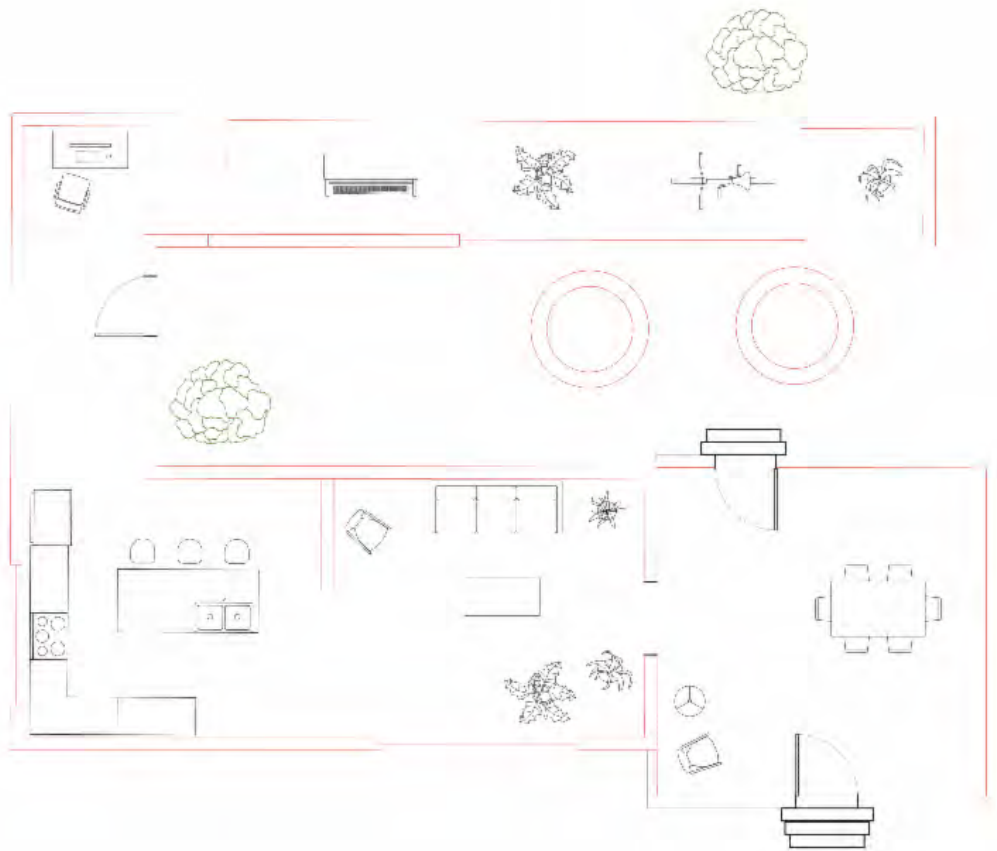


Los Angeles, California...
but with a cold and snowy climate

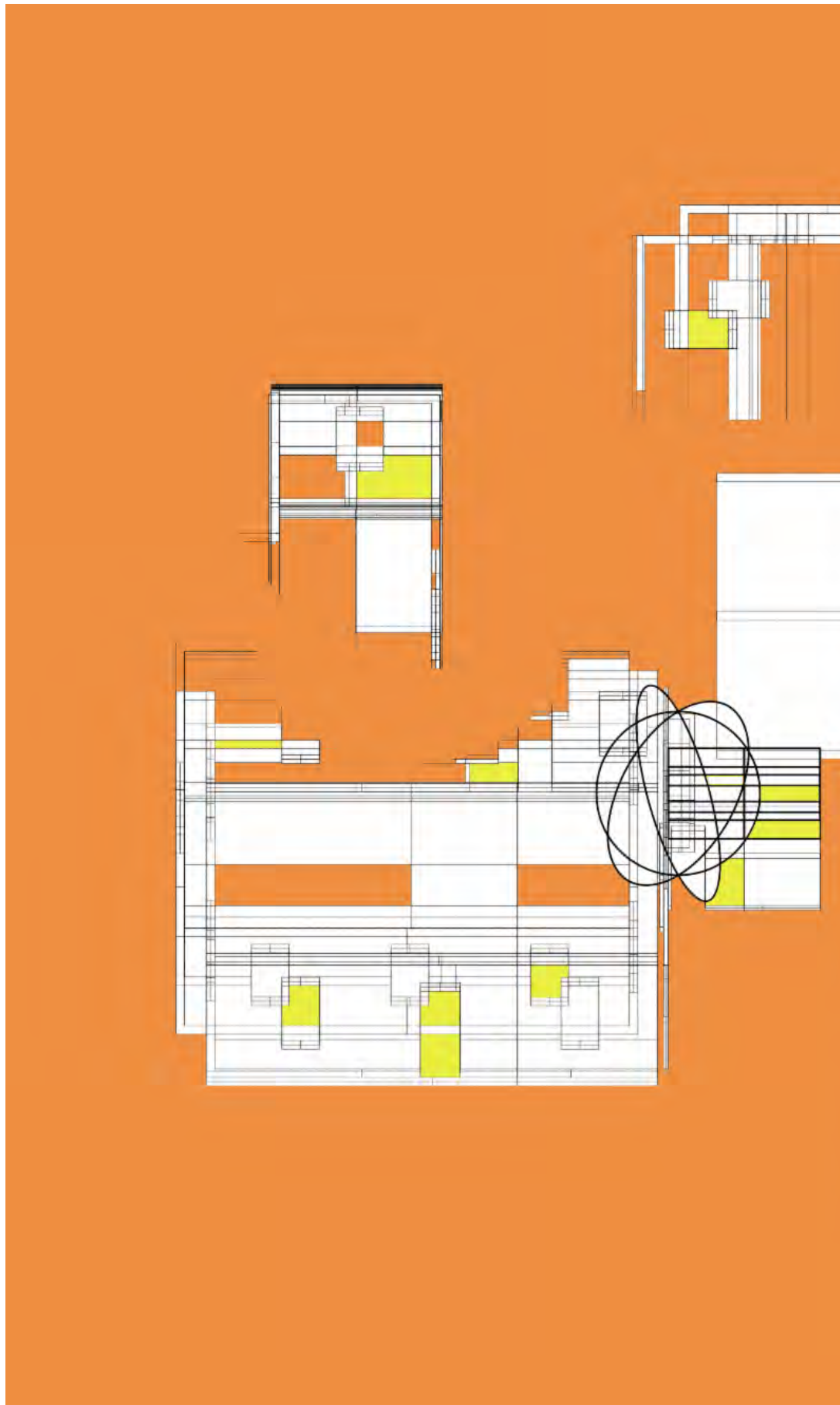


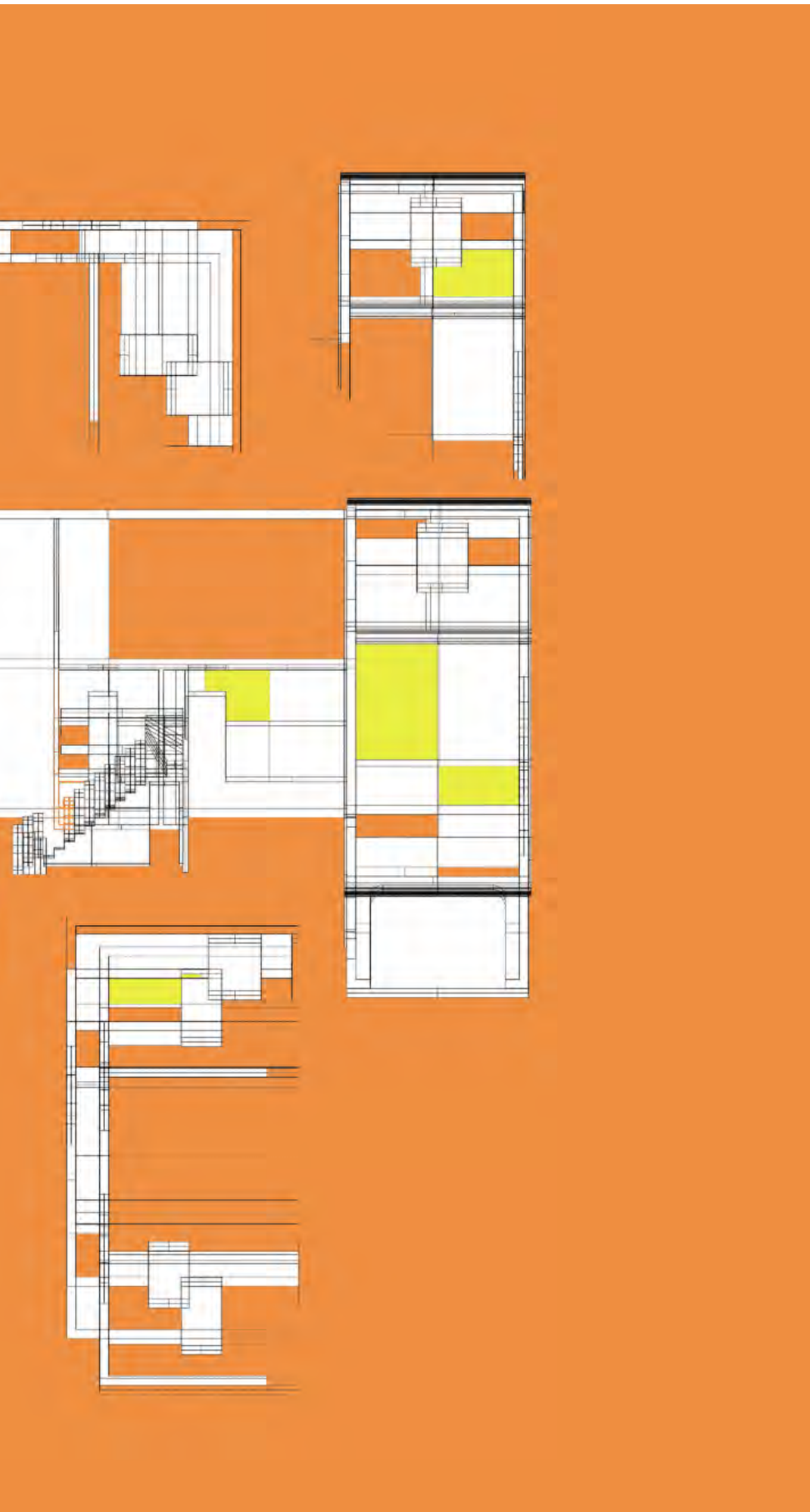


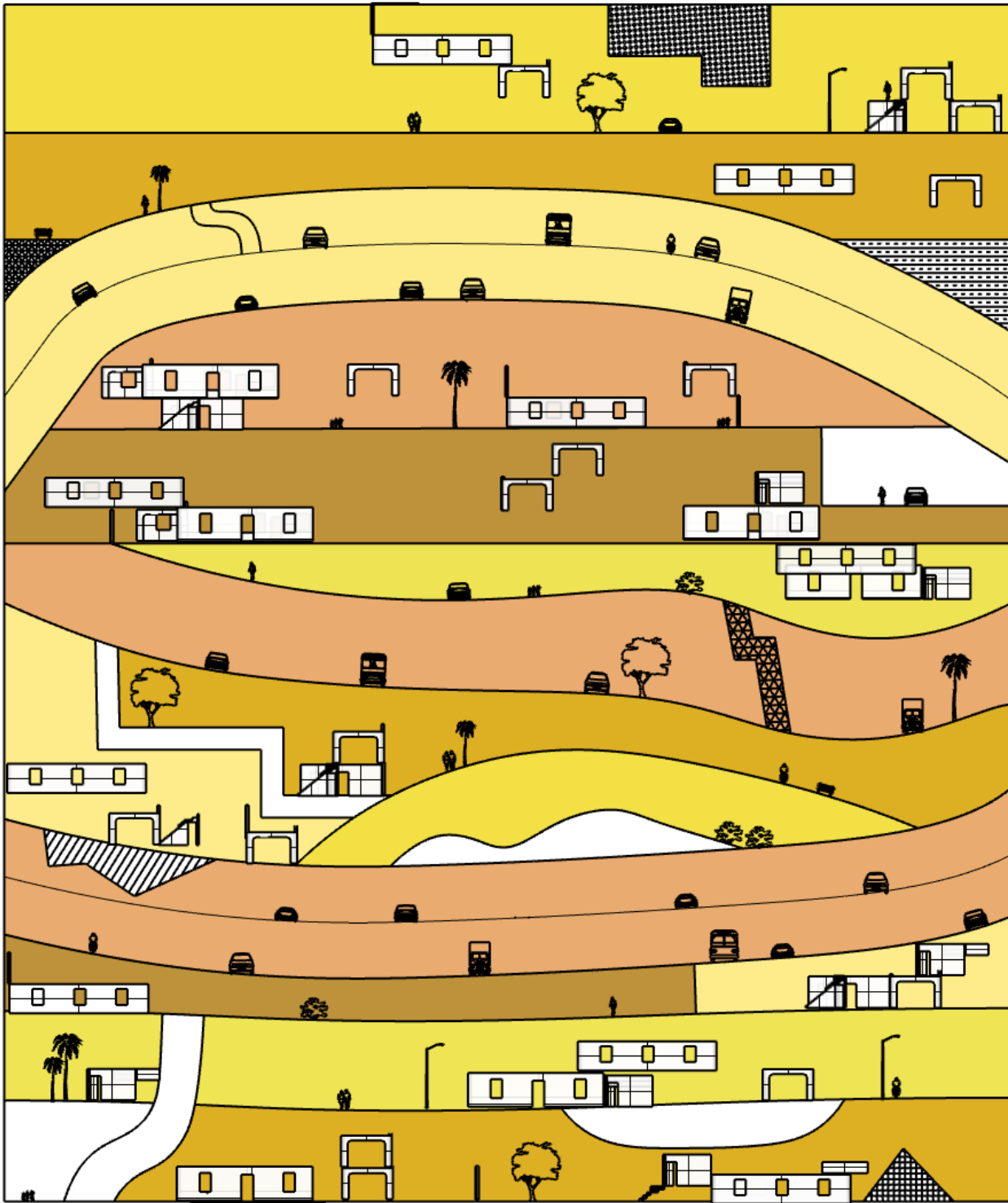






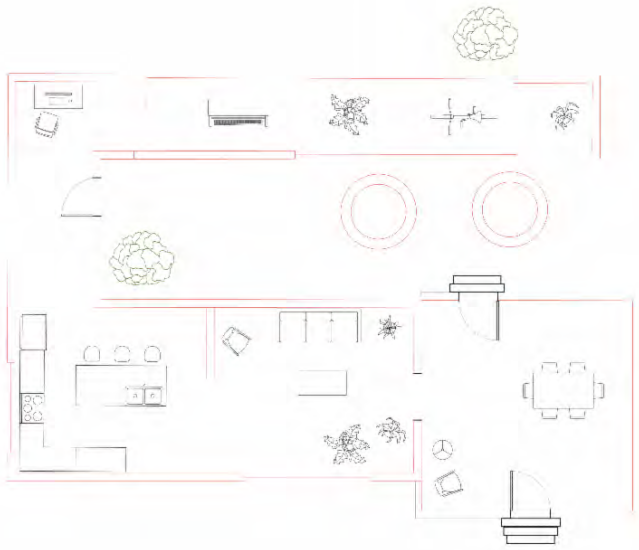




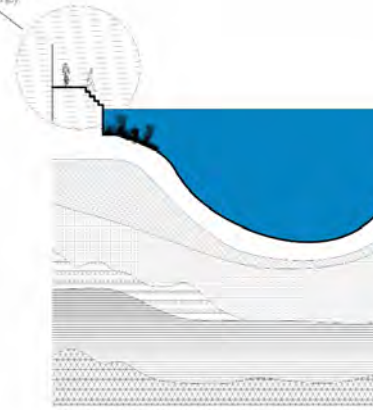


REFLECTIONS

Los Angeles Studies: Mar Vista and the L.A River

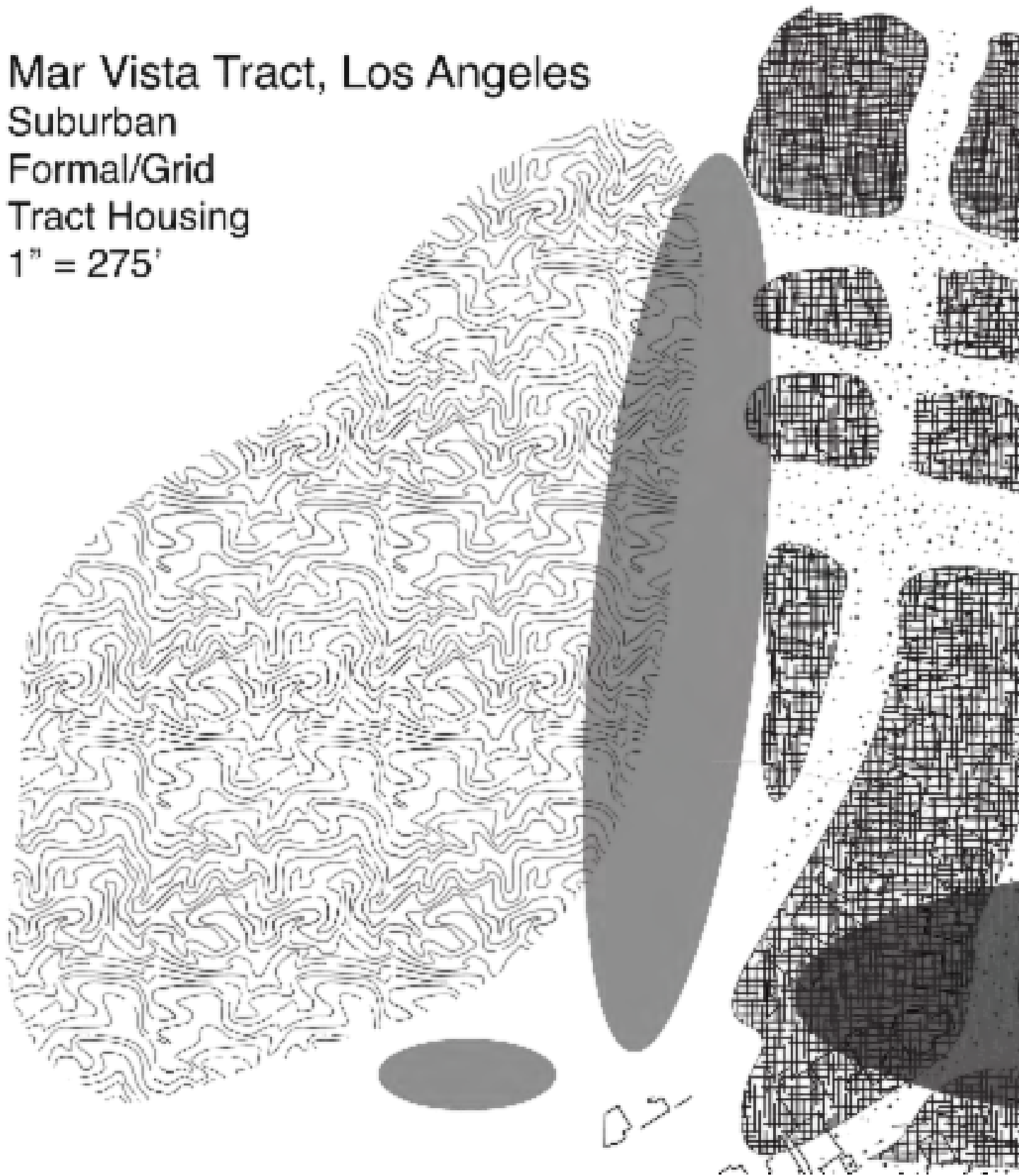


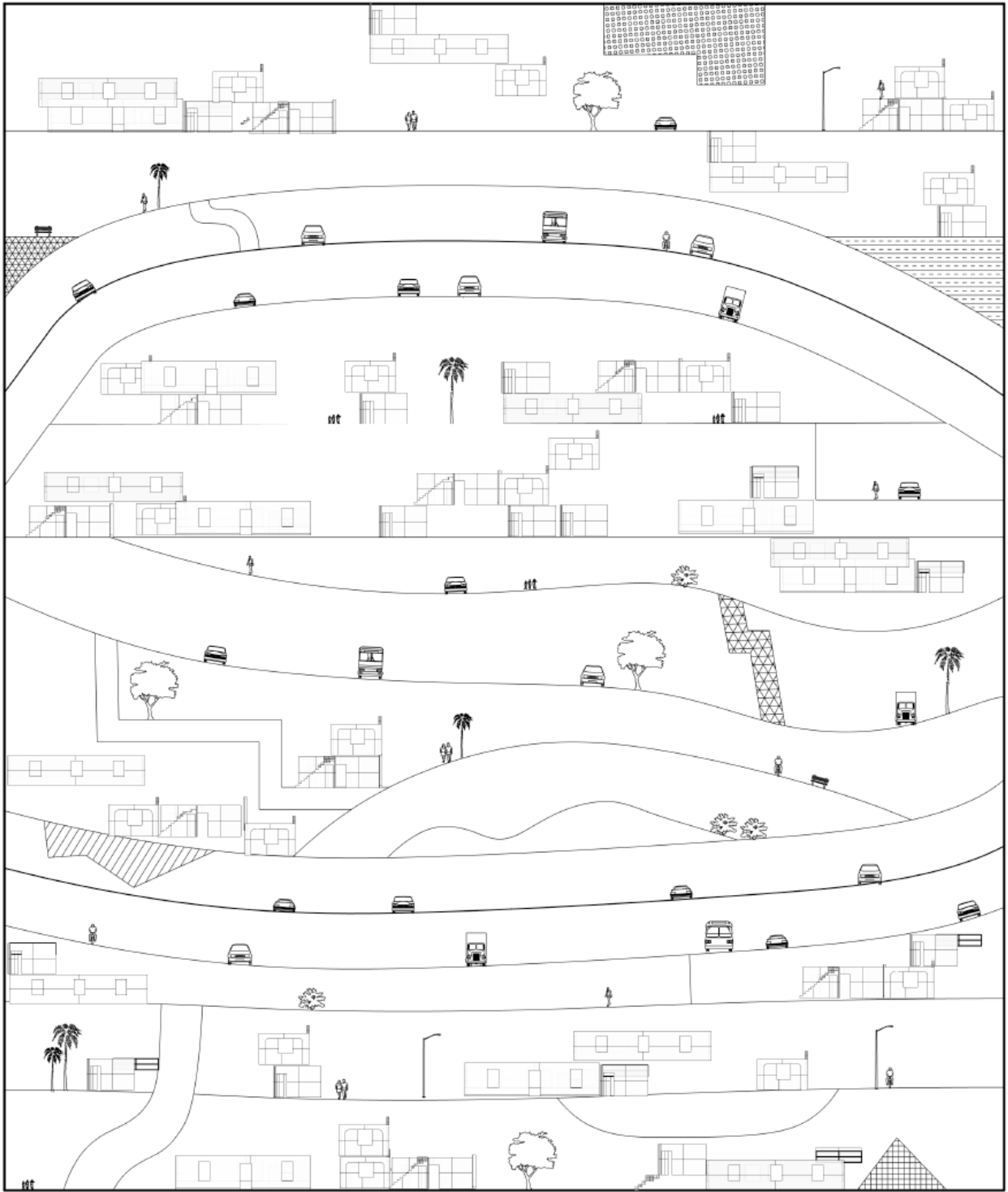
access or
retention to enjoy
the water



Mar Vista Tract, Los Angeles

Suburban
Formal/Grid
Tract Housing
1" = 275'





Student Log Book